

# MINUTIAE

Get Small With Us

Initial Design  
Concepts

# Artistic Aims

- Living in an urban centre we recognise the important role nature still provides our communities and this work is a way to highlight that importance
- To create an interdisciplinary work that enables audiences to examine their own relationship with the world around them
- To utilise production elements to create a sense that the performance is melded with the natural landscape surrounding it
- Create a work with active audience engagement and opportunities for mass participation





# Choreography

Directors: Ambrose Kelso and Latonya Wigginton



- Circus and physicality as metaphor – how do we connect with the people around us?

- Embodiment of the joys found in nature – To run through a field, to run your hands through the grass



- Day dreams – What would it feel like to soar in the air, or to be swept up by the strength of a summer storm





# Script

Writer: Lara Croydon

- Words that wind between and through the physical performance, lending a through line and cohesion
- Recorded by Lara once complete and melded into the show's sound design
- A combination of poetry, story telling and mediation that guides audiences through the work and encourages not just attention but also self-examination
- Active calls to action to the audience- to touch, look, smell, breath, exist

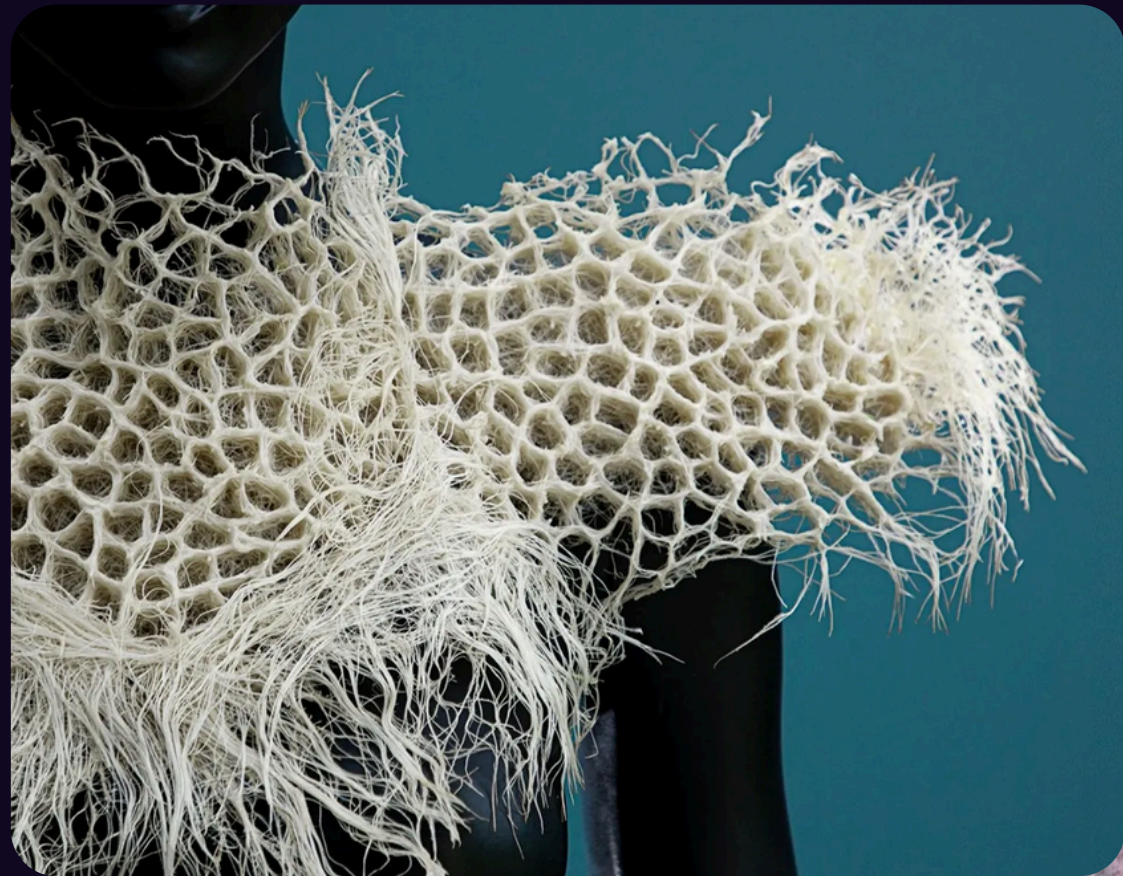




# Costume Design

Designer: Joseph Noonan

- Designs inspired by the natural world in general and more specifically with ideas of cells and micro organisms
- Experimenting with new fabric technologies such as 'root' and 'mushroom' fabrics
- Experiment with natural dyeing methods and aim to capture the colours of the Australian bush
- Keep purchases of new materials below 20%



Artist: Zena Holloway



Artist: Rachel Field





# Set and Lighting

Designer: Michael Richardson

- Keeping tourability at the forefront of set design
- The natural environment as the featured set piece with a lighting design highlighting trees and surrounding bushland
- Experiment with technologies such as LED pixel netting and programmable light sculptures as a way to meld the aerial rigs hard, industrial lines with the natural setting
- Ask how can advancing technologies reconnect audiences with nature?



Image of *Lightscape*





# Composition and Sound Design

Composer & Designer: Winter Cyan

- Soundscapes reflecting different Australian biomes/habitats
- A composition that is able to shift between realistic soundscape and musical pieces and meld the two together
- Soundscapes that reflect urban environments and the tension/relationship between industrial and natural sounds
- Design that is able to meld recorded voice with the musical soundtrack

